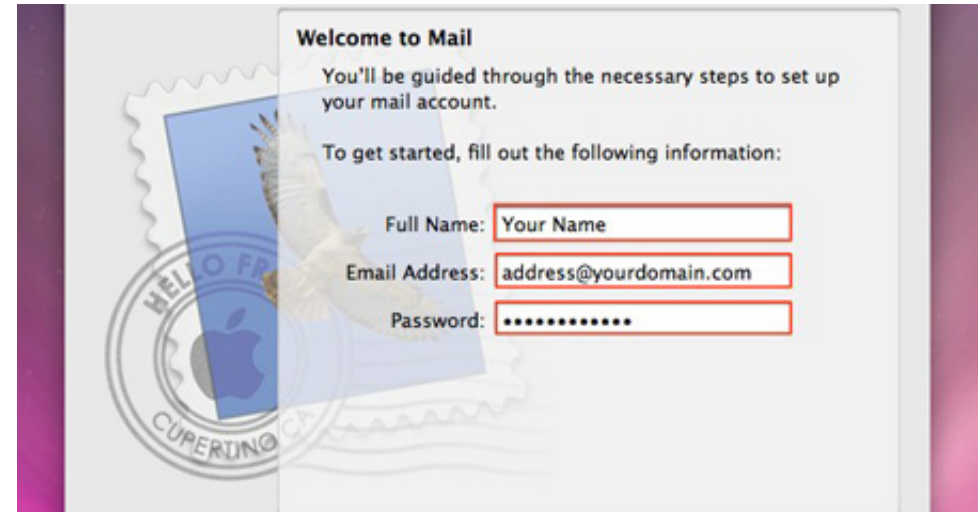


Apple Mac Mail (Mac OS X) Email Setup

Step 1. Open Mail from your dock. If the icon is not visible then you will need to launch it from your Applications folder



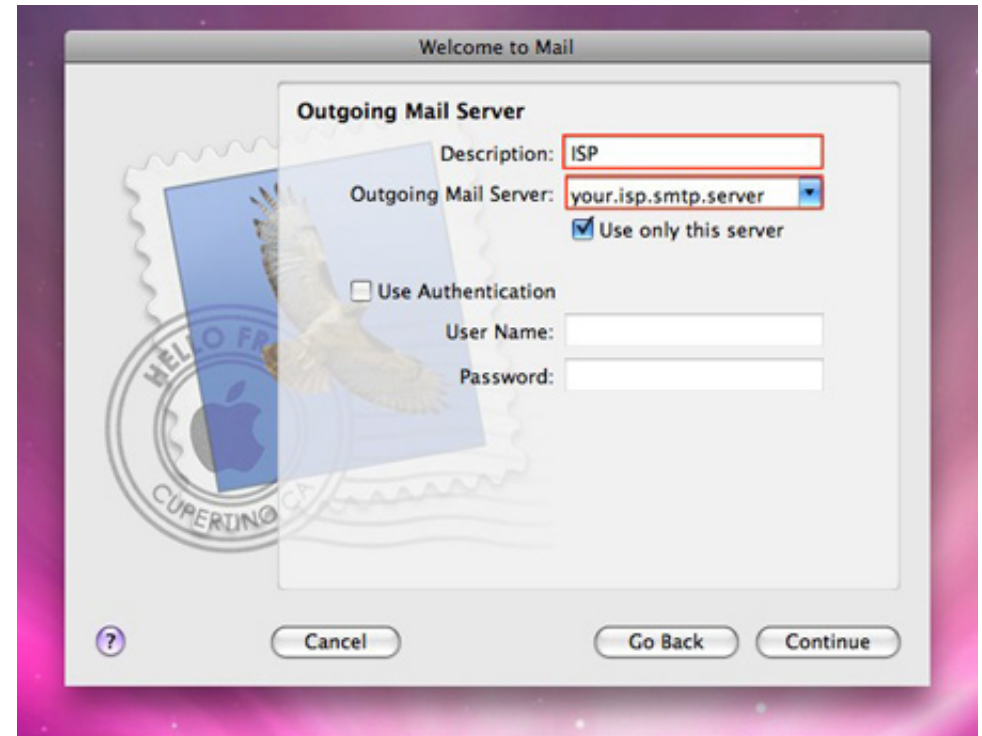
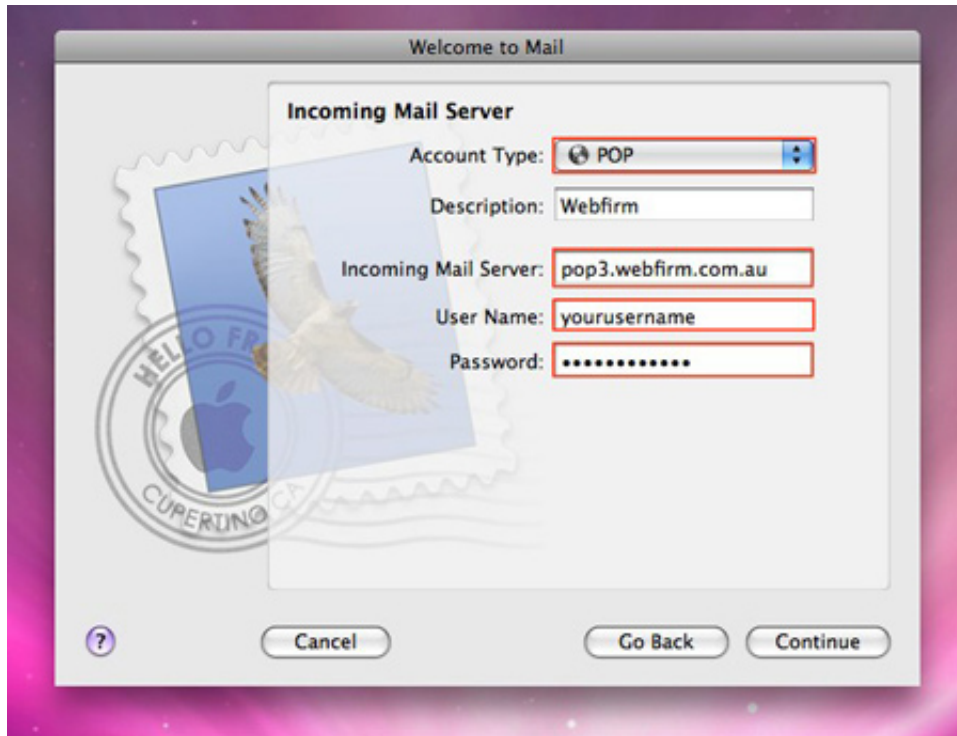
Step 2. Insert your full name, email address, password provided and click continue.



Apple Mac Mail (Mac OS X) Email Setup

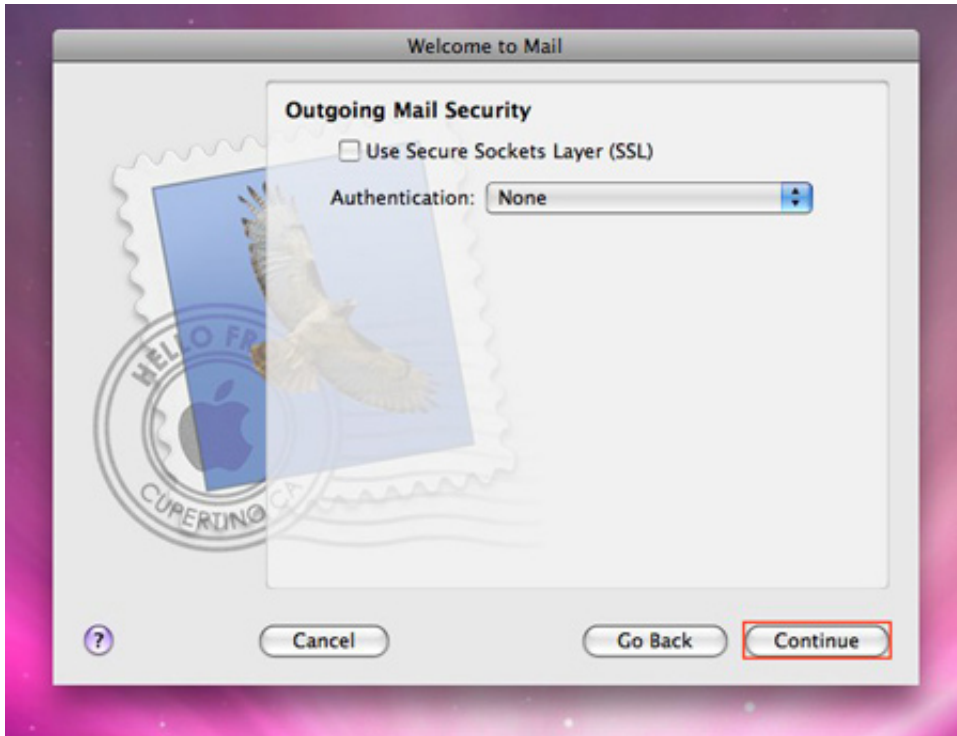
Step 3. Select POP from the account type dropdown and insert 'pop3.webfirm.com.au' as the incoming mail server. Insert your username and password, click continue.

Step 4. Insert your ISP SMTP server, you may need to check the relevant ISP pages to find this information.



Apple Mac Mail (Mac OS X) Email Setup

Step 5. Click continue, most SMTP servers will not need authentication.
Please check your ISP SMTP settings.



Step 6. Check the details shown in the summary are correct, click continue.
Congratulations, your webfirm email is now correctly set up. Try sending an e-mail to yourself to test your account. Should you have any problems please contact (08) 6252 5200.

